



Helping make shopping
accessible for all



Installation of a Changing Place and Quiet Room at Guildford Friary Shopping Centre

BACKGROUND

The Friary is a large shopping centre located in the heart of Guildford. As well as an extensive range of shops over two levels, it also has a wide range of food concessions on the third level. Guildford Borough Council approached Aveso to improve the Friary's facilities with the installation of a new Changing Places toilet and quiet room; this is the first Changing Places toilet in Guildford, helping to make the town centre accessible to everyone.

Key Considerations

- Space needed to accommodate both a toilet and quiet room.
- Easy access required.
- A need to accommodate people with a diversity of needs in both the toilet and quiet room.
- Highly visible from the main shopping area.



Want information about Changing Places?

[Download our Changing Places guide](#)



SOLUTION

The Changing Places facility includes a ceiling hoist, an adult electric height-adjustable changing table, a peninsular toilet, a height-adjustable wash basin, a privacy screen and a range of equipment to enable a person and carer(s) to use the toilet safely and comfortably. A quiet room was also created specifically to provide a safe break out space for those with autism, dementia, cognitive impairment or other special needs.

"The addition of this new Changing Places facility makes Guildford a much more inclusive and accessible place, and we hope that others will follow suit and choose to invest in facilities which are welcoming and accessible for everyone." Jennifer Corless, Head of Communications at Challengers (a charity supporting disabled children and young people across the South East)

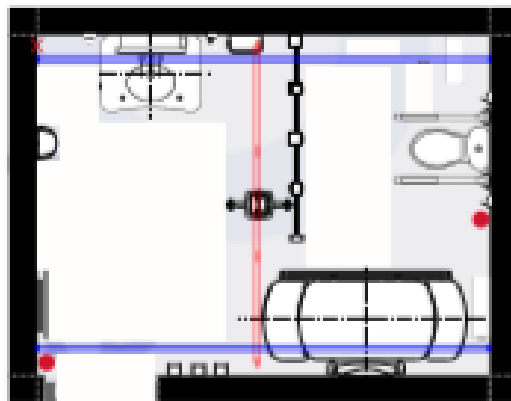
Benefits

- The calming colours, dimmed lighting & comfortable chairs used in the quiet room make it a welcoming space for those with autism, dementia, cognitive impairment or other special needs.
- Ground floor, easy access to the facility direct from the centre.
- Prominent signage makes it easy to find.
- Design considerations to make it an appropriate facility for as diverse a group as possible.



TECHNICAL

Layout



Equipment

- Astor CTX Changing Table.
- Astor A2B Compact Ceiling Hoist.
- Astor ABW6 Height Adjustable Wash Basin.
- A peninsular toilet.
- Ocura Wall-Mounted Privacy Screen.
- Accessories including grab rails, support arms and a colostomy bag shelf.

Visit our [website](#) for [CAD/BIM files](#), and [equipment spec sheets](#)